

COURSE SELECTION PARENT WEBINAR

Katy ISD Academic Counseling, College and Career Guidance

SchoolLinks

TOPICS COVERED

What is course selection?

How does the process work?

How course selection will support long term goals. (College, Career, Military Readiness-CCMR)

Using SchoolLinks for students and parents.

SchoolLinks assessments that will help guide choices.

Using the SchoolLinks course catalog

What can parents and students do now to plan for upcoming course selections?



SchoolLinks

COURSE SELECTION BY THE NUMBERS

- 53,626 students will be course planning with 191 counselors

<u>5th Graders</u>	<u>6th, 7th, & 8th Graders</u>	<u>9th, 10th & 11th Graders</u>
7,209 Students	22,360 Students	24,057 Students
59 Elementary Counselors	58 Junior High Counselors	74 High School Counselors



WHAT IS COURSE SELECTION?

- ❑ An opportunity to select courses that meet student needs
 - ❑ Parents and students should consider student strengths and interests
 - ❑ Consult with counselors
 - ❑ Certain courses are required each year and choices become more flexible as students progress towards graduation
- ❑ A process of choosing courses for the upcoming school year
 - ❑ Takes place each Spring when planning for secondary school years
 - ❑ Starts in 5th grade (planning for 6th - 12th)
 - ❑ Counselors use course requests to build student schedules
 - ❑ Student choices drive staffing and planning for the campus



HOW DOES THE PROCESS WORK?

- ❑ Students choose courses using SchoolLinks
 - ❑ With guidance from parents
- ❑ Counselors meet with students
 - ❑ Answer questions
 - ❑ Review 3 and 4 year plan to ensure all requirements are met to align with post-secondary goals, CCMR, and graduation requirements
- ❑ Parents view and approve course plans
 - ❑ Review 3 and 4 year plan to ensure all requirements are met to align with post-secondary goals, CCMR, and graduation requirements

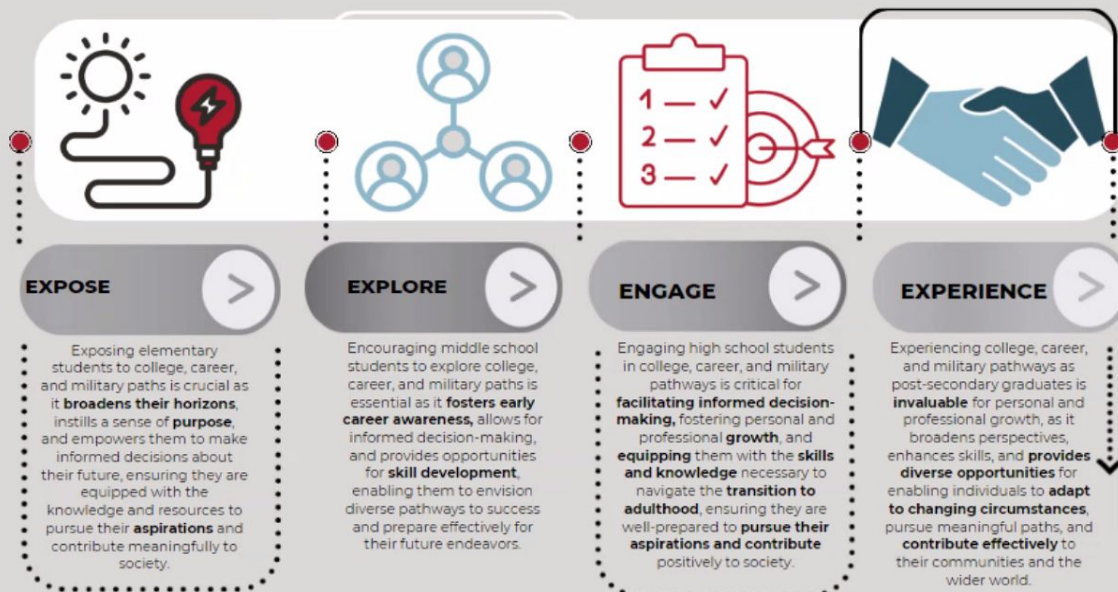


SchoolLinks

COURSE SELECTION SUPPORTS

LONG TERM GOALS

CCMR - K-12 TO POST-SECONDARY EXPERIENCE



USING SCHOOLINKS - THE BASICS

- ❑ Compatible Devices:
 - ❑ Computer (laptop, desktop), chromebook, tablet (iPad)
 - ❑ Use Chrome browser
 - ❑ College Application Manager does not work well on Safari
 - ❑ Course Planner works best on larger screens



SchoolLinks

USING SCHOOLINKS - THE BASICS

Access

- Login to MyKaty Cloud



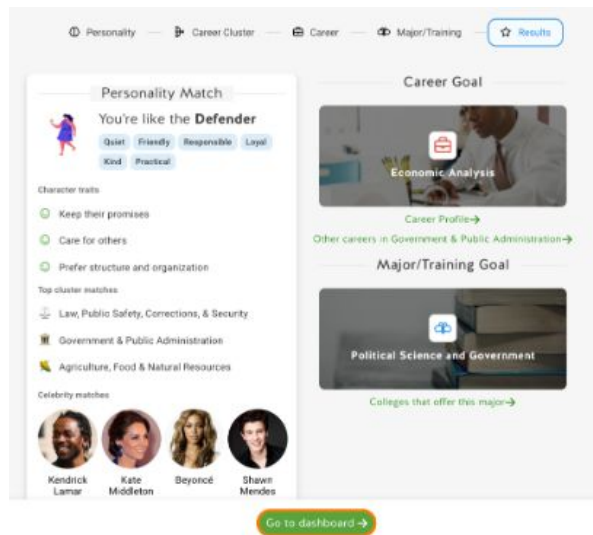
- Students must log into SchoolLinks through MyKaty Cloud
- Parents must log into SchoolLinks through MyKaty Cloud using HAC login information
- [Family Technology Resources and Support](#)



SchoolLinks

USING SCHOOLINKS - ONBOARDING

- ❑ Students must onboard before using course planner
- ❑ [Onboarding help article](#) (must be logged into SchoolLinks to view)



The Onboarding Experience

Onboarding is a 4-part process including:

- Taking the **Find Your Path** assessment
- Choosing a **Career Cluster**
- Selecting a **Career Goal**
- Selecting a **Major/Training Goal**

**Note: the choices you make in onboarding are not permanent. You will be able to retake the Find Your Path assessment and change goals after completing the onboarding process.*



SchoolLinks

USING SCHOOLINKS



- ☐ **Course Planner**
 - ☐ Students can see previous, current and future coursework
 - ☐ Students can edit future courses
- ☐ **Personalized Plan**
 - ☐ For 5th graders
 - ☐ KAP Acknowledgement
 - ☐ KAP Auto enrollment Opt-Out for parents
 - ☐ Review and submit 3 year plan before meeting with their counselor
 - ☐ For 6th and 7th graders
 - ☐ Review Goals
 - ☐ Review and submit 3 year plan before meeting with their counselor
 - ☐ For 8th - 11th graders
 - ☐ Review CCMR and Performance Acknowledgement and Endorsement information
 - ☐ Select CCMR and Performance Acknowledgements
 - ☐ Review Goals
 - ☐ Review and submit 4 year plan before meeting with their counselor
- ☐ **Students must submit course planner and personalized plan before meeting with their counselor**



SchoolLinks

USING SCHOOLINKS - ASSESSMENTS TO HELP GUIDE CHOICES

SchoolLinks assessments

Take these assessments to get help navigating the college and career planning process.

Find your path



Get suggested career clusters based on your personality.

Use this info to jumpstart your college and career exploration process!

● NEVER TAKEN

Start assessment →

Would you rather



Choose your favorite activities to get career suggestions.

Use this info to see which of your favorite careers match your hobbies!

● NEVER TAKEN

Start assessment →

Top skills



Discover your top skills and areas for improvement.

Use this info to see which careers match your skill set!

● NEVER TAKEN

Start assessment →

Learning style



Answer questions about how you prefer to learn and solve problems.

Use this info to set yourself up for more effective learning in the future!

● NEVER TAKEN

Start assessment →

Student focus



Discover your motivations for life after high school.

Use this info to analyze the colleges and programs you're interested in!

● NEVER TAKEN

Start assessment →

Discover your campus lifestyle



What kind of lifestyle do you want to lead at your college campus?

Take our quiz and find out!

● NEVER TAKEN

Start assessment →



SchoolLinks

USING THE SCHOOLINKS ONLINE COURSE CATALOG

- ☐ Where to find the course catalog
 - ☐ Public link on KISD website
 - ☐ Locating the course catalog while using schoolinks
- ☐ Course Catalog is Updated each year during December-January
 - ☐ Student Resources
 - ☐ Endorsement Information
 - ☐ Graduation Plans
 - ☐ Programs of Study
 - ☐ Course Offerings



SchoolLinks

WHAT CAN STUDENTS AND PARENTS DO NOW TO PREPARE FOR UPCOMING COURSE SELECTIONS?

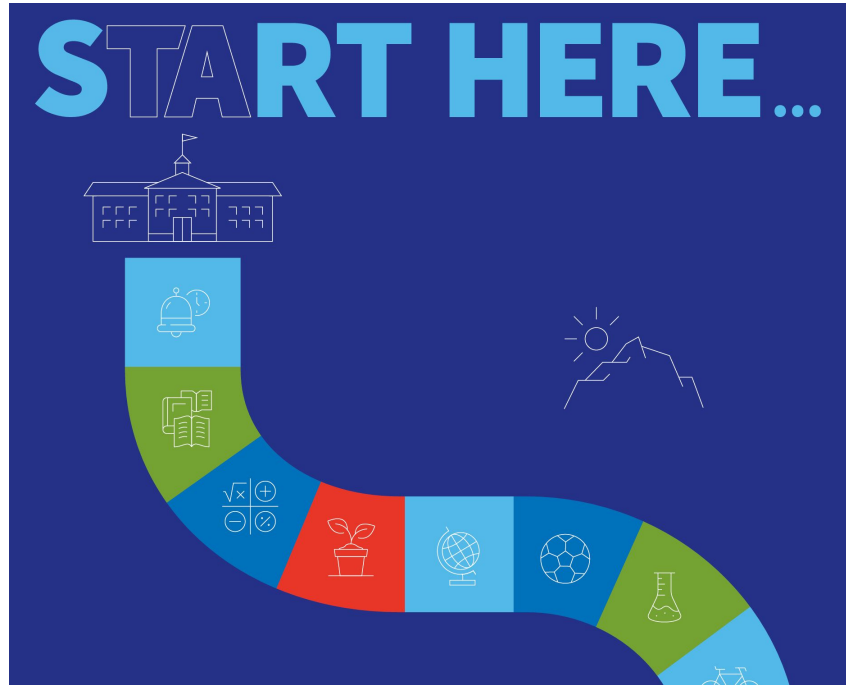
- ☐ Verify username and password and parent contact information (email address)
- ☐ Review 3 and 4 year course plans in SchoolLinks
- ☐ Review/Update goals in SchoolLinks
- ☐ Review/Update Assessments in SchoolLinks
- ☐ View unofficial transcript in SchoolLinks and or report card/current grades in HAC
- ☐ Explore Pathway information with your student to understand choices



SchoolLinks

LET'S TAKE A LOOK AT SCHOOLINKS

- ☐ Student demos
- ☐ Parent view



IMPORTANT DATES

- ☐ Campus Parent Nights
- ☐ District events
- ☐ Counselor meetings with students
- ☐ Campus due dates for course planner and personalized plan

*be on the lookout for information from your campus regarding course selection processes, procedures, dates and deadlines



SchoolLinks

DISTRICT EVENTS



Moving Up
To Junior High or High School

Parents are invited to attend a night of education regarding valuable information on supporting the transition to Junior High and High School as well as the course selection presented by Katy ISD Academic Counseling in conjunction with Katy ISD Social Workers.

Date: January 16, 2025
Transition to Junior High School: 6:00-7:00 pm
Transition to High School: 7:00-8:00 pm

Location: Leonard Merrell Center
 6301 S. Stadium Ln
 Katy, TX 77494



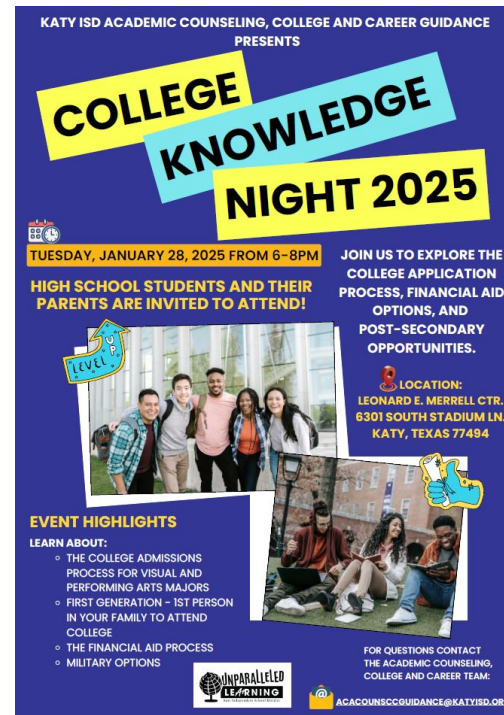
**3RD ANNUAL
KATY ISD
COURSE SELECTION FAIR**

★DATE: JANUARY 22, 2025 ★SHOWING: 6:00-8:00PM★

Parents, guardians, and students in grades 5 - 11 are invited to a front-row seat to explore a wide range of exciting courses and programs available at all Junior High and High Schools for the 2025-2026 school year! Come and discover the innovative and unparalleled learning experiences available in Katy ISD!

★STARRING:★
 Academic, KAP, AP, Dual Credit, and Virtual Course Offerings, Fine Arts, Foreign Languages, Career and Technical Education, Special Programs, Raines Academy, Miller Career and Technology Programs, Athletics, SchoolLinks, 3 and 4 year planning, Course Selection 101

LEONARD E. MERRELL CENTER
 6301 S. Stadium Ln, Katy, TX 77494



KATY ISD ACADEMIC COUNSELING, COLLEGE AND CAREER GUIDANCE PRESENTS

**COLLEGE
KNOWLEDGE
NIGHT 2025**

TUESDAY, JANUARY 28, 2025 FROM 6-8PM

HIGH SCHOOL STUDENTS AND THEIR PARENTS ARE INVITED TO ATTEND!

JOIN US TO EXPLORE THE COLLEGE APPLICATION PROCESS, FINANCIAL AID OPTIONS, AND POST-SECONDARY OPPORTUNITIES.

LOCATION:
 LEONARD E. MERRELL CTR.
 6301 SOUTH STADIUM LN.
 KATY, TEXAS 77494

EVENT HIGHLIGHTS

LEARN ABOUT:

- THE COLLEGE ADMISSIONS PROCESS FOR VISUAL AND PERFORMING ARTS MAJORS
- FIRST GENERATION - 1ST PERSON IN YOUR FAMILY TO ATTEND COLLEGE
- THE FINANCIAL AID PROCESS
- MILITARY OPTIONS

FOR QUESTIONS CONTACT THE ACADEMIC COUNSELING, COLLEGE AND CAREER TEAM:
ACACOUNSCGUIDANCE@KATYISD.ORG

EXAMPLE PERSONALIZED PLAN (5TH GRADE)

DISTRICT
Personalized Plans

SELECTED MOORE
Middle & High School

▼

Demo as student

JS

39

5

?

⚙️

STUDENTS

05

ANALYTICS

DISTRICT

COLLEGES

CAREERS

FINANCES

ALUMNI

PROGRAMS

ADMIN TOOLS

← All student plans

2023 - 2024

6th grade • Haskett Junior High

0 Comments

🗒️

Katy ISD
Course Plan (5th Grade)

Due date: ①
March 18, 2025

Lock date: ①
March 29, 2024

STUDENT

● SUBMITTED 03/16/2024

COUNSELOR

● APPROVED 03/19/2024

GUARDIAN

● APPROVED 03/19/2024

1 Academic Plan

Review and verify your course plan with your guardian

Course plan submitted for Haskett Junior High

View course plan

2 AP/KAP Course Commitment

Katy ISD recognizes the value of student participation in advanced academic coursework and encourages students to graduate from high school with at least one advanced academic course credit such as Advanced Placement. Participation in advanced academic courses is a foundation of college readiness. Students who participate are more likely to complete a bachelor's degree in college and typically have higher college GPAs (Hargrove, Godin and Dodd, 2007; Dodd and Keng, 2008). The intent of this commitment is to maximize each student's potential for success in AP and KAP courses.

Parents and students are encouraged to preview the AP/KAP Course Commitment Form using the link(s) provided::

[Course Commitment Form](#) (English)

[Course Commitment Form](#) (Spanish)

By submitting this personalized plan, I acknowledge my opportunity to preview the AP/KAP course commitment form. I understand that all course expectations will be communicated directly from the junior high campus at the start of the 2024 -2025 school year.

🗨️

COURSE SELECTION PARENT WEBINAR #3

- ❑ Wednesday January 29, 2025
- ❑ 5:30-6:30 pm
- ❑ Link to Join will be on the [Course Selection Resources Webpage](#)
- ❑ Topics will include:
 - ❑ Exploring course options
 - ❑ Planning for an Endorsements
 - ❑ Understanding Personalized Graduation Plans
 - ❑ Utilizing the Course Catalog
 - ❑ College and Career Readiness
 - ❑ Performance Acknowledgments
 - ❑ Example 3 and 4 year plans

